

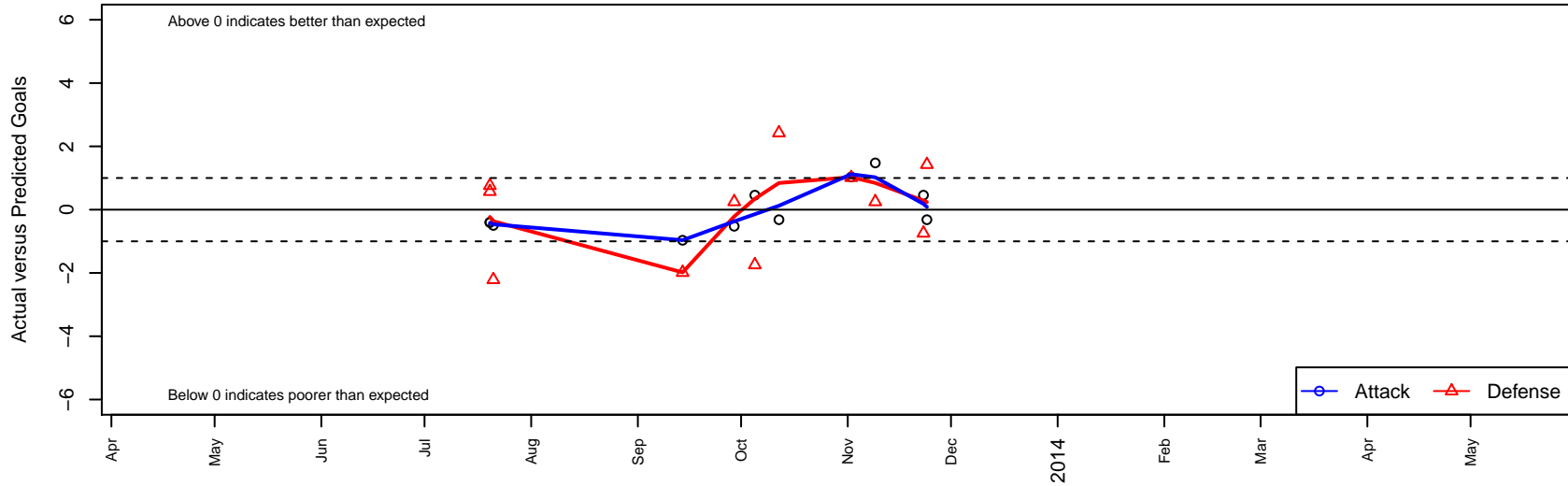
Ballistic United SC Elite B95

, CAN
 B95 total strength=1562
 attack=19.46 defense=10.13
 alt names used:

Venues played:
 Albion Cup Showcase U19
 NorCal NPL P1 State Premier 2 U19



Ballistic United SC Elite B95
 Dots are actual minus expected GF (blue circles) and GA (red triangles).
 Blue line is smoothed change in attack strength. Red is smoothed change in defense strength.



	date	home		away		venue	pred.home	pred.away
19508	2013-11-24	Ballistic United SC Elite B95	0	PAC San Jose Academy B95	4	NorCal NPL P1 State Premier 2 U19	0.32	5.42
19287	2013-11-23	Burlingame SC Ajax B95	7	Ballistic United SC Elite B95	1	NorCal NPL P1 State Premier 2 U19	6.26	0.54
17984	2013-11-09	De Anza Force SC Blue B95	2	Ballistic United SC Elite B95	2	NorCal NPL P1 State Premier 2 U19	2.25	0.52
17113	2013-11-02	Ballistic United SC Elite B95	2	Pacific SA S B95	2	NorCal NPL P1 State Premier 2 U19	0.97	3.01
14234	2013-10-12	PAC San Jose Academy B95	3	Ballistic United SC Elite B95	0	NorCal NPL P1 State Premier 2 U19	5.42	0.32
13177	2013-10-05	Ballistic United SC Elite B95	1	Burlingame SC Ajax B95	8	NorCal NPL P1 State Premier 2 U19	0.54	6.26
12585	2013-09-29	Ballistic United SC Elite B95	0	De Anza Force SC Blue B95	2	NorCal NPL P1 State Premier 2 U19	0.52	2.25
10347	2013-09-14	Pacific SA S B95	5	Ballistic United SC Elite B95	0	NorCal NPL P1 State Premier 2 U19	3.01	0.97
4414	2013-07-21	Albion SC White B95	6	Ballistic United SC Elite B95	0	Albion Cup Showcase U19	3.79	0.50
4087	2013-07-20	Ballistic United SC Elite B95	0	West Coast FC United B95	6	Albion Cup Showcase U19	0.40	6.57
4090	2013-07-20	Ballistic United SC Elite B95	0	Riverside FC Blue B95	4	Albion Cup Showcase U19	0.41	4.76